

**DVA**<sup>®</sup>  
DE VECCHI S.R.L.

# WATER SOFTENERS



**GIX8 RC**

# WATER SOFTENERS

**DVA**<sup>®</sup>  
DE VECCHI S.R.L.

## WHY DO I NEED A WATER SOFTENER?

It is well known that water, when heated, can create serious problems due to scale formation. Softened water, instead, does not form scale and also allows you to:

- save money on machine maintenance
- keep your appliances running and lasting longer
- drastically reduce the amount of detergent during washing
- guarantee the absence of marks on shiny surfaces after washing.

## The GIX8 RC model

is the GIX8 of the GIX series which comes with a new cabin that protects from dust and foreign bodies.

Its small size makes it easy to handle and suitable for installation in small spaces.

The wide lid opening makes it easier to insert salt into the brine tank and protects the upper part of the softener from possible impacts.

The water softener cover remains attached to the salt container during opening.

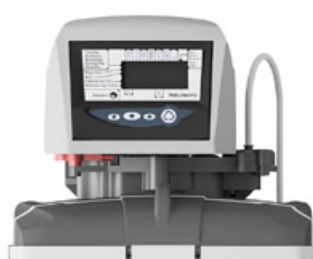


DESIGN

## CHARACTERISTICS OF LOGIX VALVE



**CHRONOMETRIC**

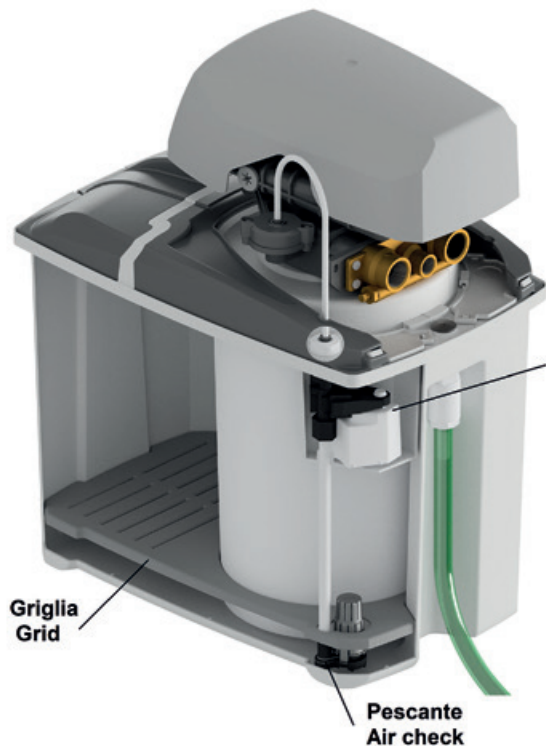


**VOLUMETRIC**

The LOGIX valve is characterised by its excellent mechanical qualities which make it robust and reliable.

The **GIX8 RC model** is available in the **Chronometric** and **Volumetric** versions.

# CHARACTERISTICS



**Dispositivo Antiallagamento Anti over-flow Device**

The **GIX8 RC** water softener has a non-return valve to prevent water from returning to the brine tank. This mechanism strengthens the work of the anti-flooding device.

The grid inside the brine dissolves the salt homogeneously to carry out a more effective regeneration.

The system for releasing the cylinder from the brine body allows for easier maintenance and cleaning.

## TECHNICAL SOLUTIONS

All the components inside the **GIX8 RC** have been designed to ensure maximum efficiency and smooth operation.

Reliability is also guaranteed by the anti-overflow device, completely integrated inside, which prevents water from escaping from the brine tank.



# APPLICATIONS

The **GIX8 RC** is a compact water softener ideal to satisfy the needs of the catering sector and ideal for treating water intended for coffee machines, cup washers, ice makers and ovens.

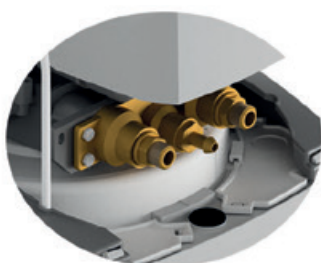


# GIX8 RC

Weight	12 Kg
Regeneration salt	1,0 Kg
Salt braine tank	20 Kg
Cyclic capacity	33.6 m <sup>3</sup> °f
Resin Quantity	5,5 lt



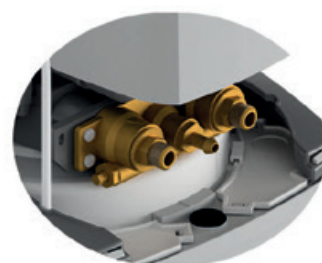
Water network connection:  
1/2" G (F)



Water network connection:  
1/2" G (F) with 3/8"G (M) fitting



Water network connection:  
3/4" G (F) with mixer



Water network connection:  
3/4" G (F) with 3/8"G (M) fitting and mixer

Flow rate	1500 l/h
Room temperature	min 4°C - max 35°C
Temperature water	min 6°C - max 25°C
Supply water pressure	min 0.2 MPa (2 bar) - max 0.8 MPa (8bar)
Power supply	Standard 230 V 50/60 Hz - Optional 120 V 60 Hz
Absorbed power	4 W
Water network connection	1/2" G (F) o 3/4" G (F) with mixer, adaptable with 3/8"G (M) fitting

SOFT WATER LITRES BASED ON WATER HARDNESS					
°f	20	30	40	50	60
°d	11	16	22	28	33
ppm CaCO <sub>3</sub>	200	300	400	500	600
GIX8 RC	1680	1120	840	672	560

## SUPPLY WATER FEATURES

Supply water:

- must be drinking and clear water (SDI 1)
- the temperature must be between min 6 °C and max 25 °C
- its hardness must be less than 900 ppm CaCO<sub>3</sub> (90°f)

