

WATER SOFTENERS

CHRONOMETRIC

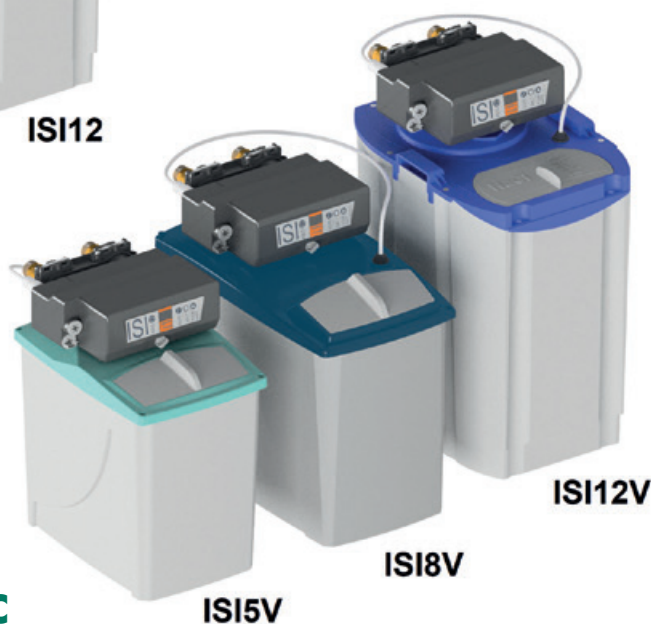


ISI12

ISI8

ISI5

VOLUMETRIC



ISI12V

ISI8V

ISI5V

ISI SERIES

WATER SOFTENERS

DVA[®]
DE VECCHI S.R.L.

WHY DO I NEED A WATER SOFTENER?

Mineral salts dissolved in water are imperceptible and necessary for our health.

Unfortunately when water is used by machines mineral salts become a problem, which compromise their

efficiency and cause the damage of the machine.

Water rich in mineral salts is called "Hard", while water with few salts is called "Soft"; more "Hard" is the water more problem can cause to the machines. Water softeners are used to filter "Hard" water to make it "Soft", so it can be used without ruining the machines.

Softened water does not promote the creation of limescale and allows to:

- save money on machine maintenance
- increase the implant duration and performance
- drastically reduce the amount of detergent during washing
- guarantee the absence of marks on shiny surfaces after washing.

CHARACTERISTICS



The models called **ISI5, ISI8, ISI12** are the automatic softeners of the ISI series.

They are reliable, quick to install and really easy to program.

ISI softeners have a compact line and require little space to work.

The word that best describes them is: Simplicity.

We will have high performance in small size

PROGRAMMING

Programming the ISI is quick and easy and once done the data will be protected by a **password** which has the function of avoid at the softener from any tampering.

The ISI series has two main version, the chronometric and the volumetric one.

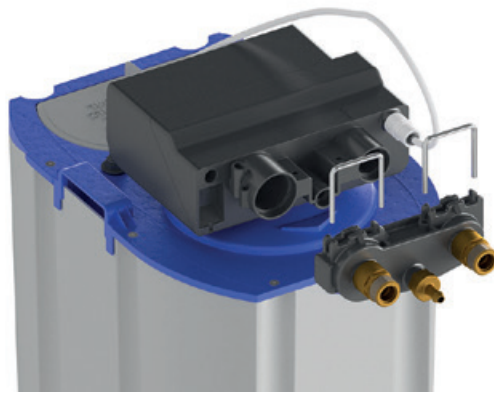


CHRONOMETRIC ISI



VOLUMETRIC ISI

DESIGN

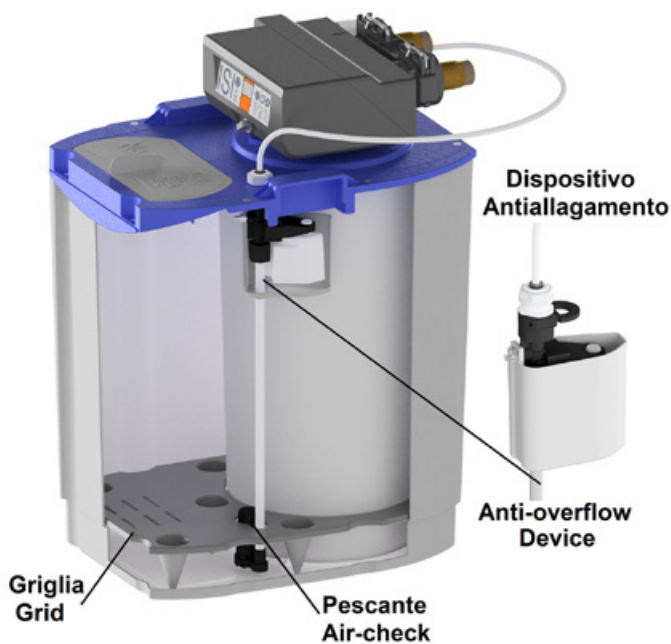


ISI softeners guarantee excellent performance in a small size and a fine design.

The connections to the net plumbing is easy to remove.

WHY ISI?

- It is quick and easy to program
- It is compact and suitable for installation in small spaces
- ISI softeners reduce the costs caused by limestone deposits.
- Reduces maintenance on the machine that supplies water



TECHNICAL SOLUTIONS

All components within **ISI** guarantee maximum efficiency and easy maintenance.

The grid inside the brine, homogeneously melts the salt to ensure a more effective regeneration.

All **ISI** softeners can be equipped with an **ANTI-OVERFLOW DEVICE (OPTIONAL)** completely integrated inside, which prevents any overflow of water from the brine

APPLICATIONS

The **ISI Series** suits for treating water destined for coffee machines, cup washers, ice makers, etc.



ISI5

Weight	11 Kg
Regeneration salt	0,6 Kg
Salt braine tank	10 Kg
Cyclic capacity	21 m ³ °f
Resin quantity	3.5 lt



ISI8

Weight	12 Kg
Regeneration salt	1,0 Kg
Salt braine tank	20 Kg
Cyclic capacity	33,6 m ³ °f
Resin quantity	5.5 lt



ISI12

Weight	15 Kg
Regeneration salt	1,5 Kg
Salt braine tank	25 Kg
Cyclic capacity	50,5 m ³ °f
Resin quantity	9 lt



Flow rate	1500 l/h
Room temperature	min 4°C - max 35°C
Temperature water	min 6°C - max 25°C
Supply water pressure	0.2 Mpa Min 2 bar - 0.8 Mpa Max 8 bar
Power supply	Standard: 230V 50/60 Hz - Optional: 120V 60 Hz
Absorbed power	6 W
Water network connections	3/4" G (M) o 3/8" G (M)

SOFT WATER LITRES BASED ON WATER HARDNESS						
°f	20	30	40	50	60	Capacità Ciclica m ³ .°f
°d	11	16	22	28	33	
ppm CaCO ₃	200	300	400	500	600	
ISI5	1050	700	525	420	350	21.0
ISI8	1680	1120	840	672	560	33.6
ISI12	2520	1680	1260	1008	840	50.4

SUPPLY WATER FEATURES

Supply water:

- must be drinking
- the temperature must be between min 6 °C and max 25 °C
- must be clear water (SDI 1)
- its hardness must be less than 90°f

